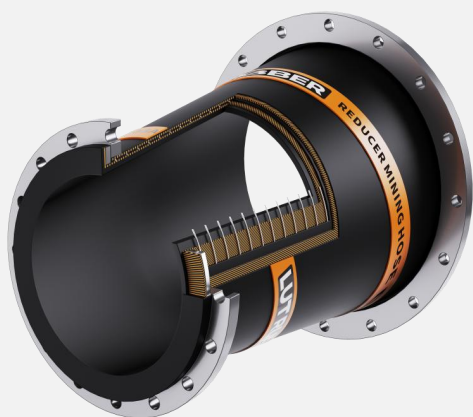


Concentric/Eccentric Reducer Mining Hose

Designed and manufactured in China , this premium product is the ultimate solution for severe wear slurry applications



Features:

- Fully customizable designs
- Allows for movement and misalignment
- Suitable for erosive and cutting/gouging slurries

Benefits:

- Durable performance in diverse slurry conditions
- Accommodates pipe movement and misalignment
- Simplifies installation (e.g., in pump suction spools)

Technical Specifications

Hose size	DN50– 1500 (2–60")
Hose length	As Request
Pressure rating	-100kPa to +5000kPa -14.5psi to +725psi
Temperature rating	-30°C to +75°C
End connections	Flanged (fixed or swivel) Flanged full spigot (fixed or swivel) Double flanged
Flange types	ASME B16.5, ASME B16.47, AS2129,AS4087, DIN ISO 7005, custom
Groove types	AWWA C606 OGS, Victaulic AGS
Thread types	BSP, NPT, API, premium, custom
Safety factor	4:1
Extra options	Custom nozzles, branches, or connections

Material Specifications

Inner liner	natural rubber Neoprene, SBR, or buty high alumina ceramic
Reinforcement	Synthetic fabric and wire helix
Outer cover	UV, ozone, and abrasion-resistant rubber
End connections	Carbon steel (painted, galvanised, custom) Stainless steel (SS304, SS316) Exotic alloy

Standard Properties

Hose Size			Liner Thickness		Vacuum Rating %	Working Pressure		Face-to-Face Length		
DN	in	mm	Std mm	Max mm		Std kPa	Max kPa	Min mm	Std mm	Max mm
100	4	102	6	12	100	1000	5000	291	308	as request
150	6	152	6	12	100	1000	5000	333	346	as request
200	8	203	6	12	100	1000	5000	351	358	as request
250	10	250	9	15	100	1000	5000	380	404	as request
300	12	300	9	19	100	1000	5000	409	461	as request
350	14	350	9	19	100	1000	5000	542	604	as request
400	16	400	12	19	100	1000	5000	579	662	as request
450	18	450	12	19	100	1000	5000	620	687	as request
500	20	500	12	19	100	1000	5000	768	814	as request
550	22	260	12	19	100	1000	5000	771	814	as request
600	24	600	12	19	100	1000	5000	778	814	as request
650	26	650	15	19	100	700	4000	916	916	as request
700	28	700	15	19	100	700	4000	924	1016	as request
750	30	750	15	19	100	700	4000	930	1016	as request
800	32	800	15	25	100	700	3000	943	1016	as request
900	36	900	15	25	100	700	3000	962	1016	as request
1000	40	1000	19	30	100	700	3000	962	1116	as request
1100	44	1100	19	30	100	700	2500	984	1116	as request
1200	48	1200	19	32	100	700	2500	997	1116	as request
1300	52	1300	19	40	100	700	2500	1013	1216	as request
1400	56	1400	19	40	100	700	2500	1029	1216	as request
1500	60	1500	19	40	100	700	2500	1044	1216	as request

Notes

Product is fully customisable and available in non-standard specifications on request.

Minimum face-to-face length for a hose with a swivel flange (beaded) ASME CL150, standard working pressure.